



Current progres in thunderstorm mapping

K. Martyński, A. Kułak, J. Młynarczyk, E. Słomińska, J. Błęcki, J. Słomiński, R. Wronowski, M. Strumik

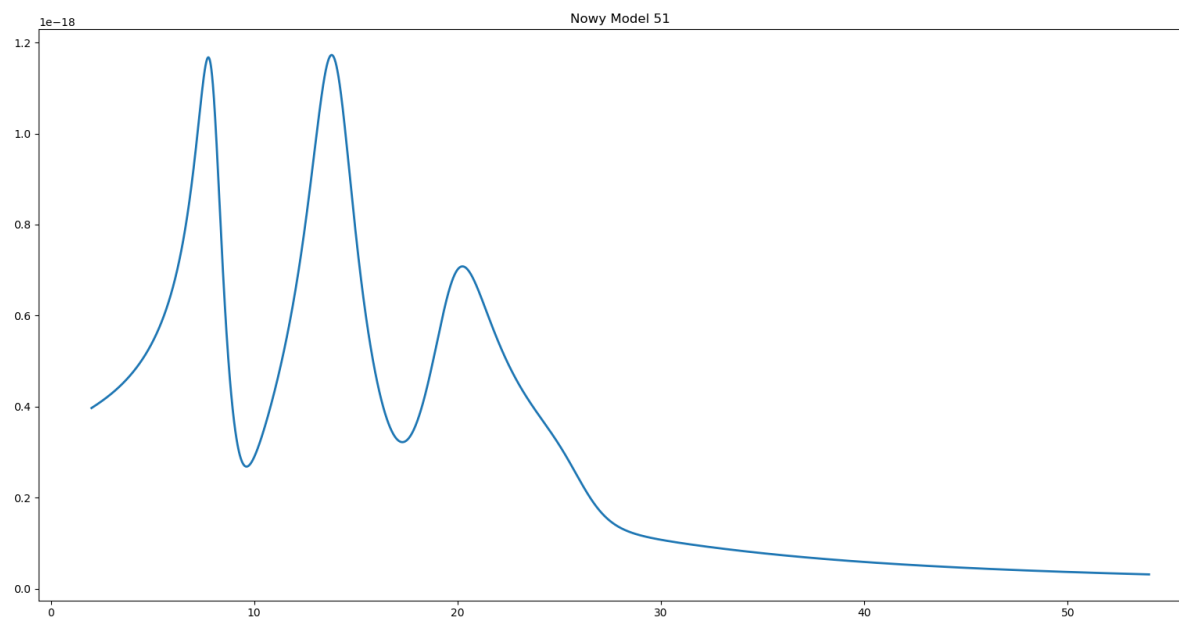
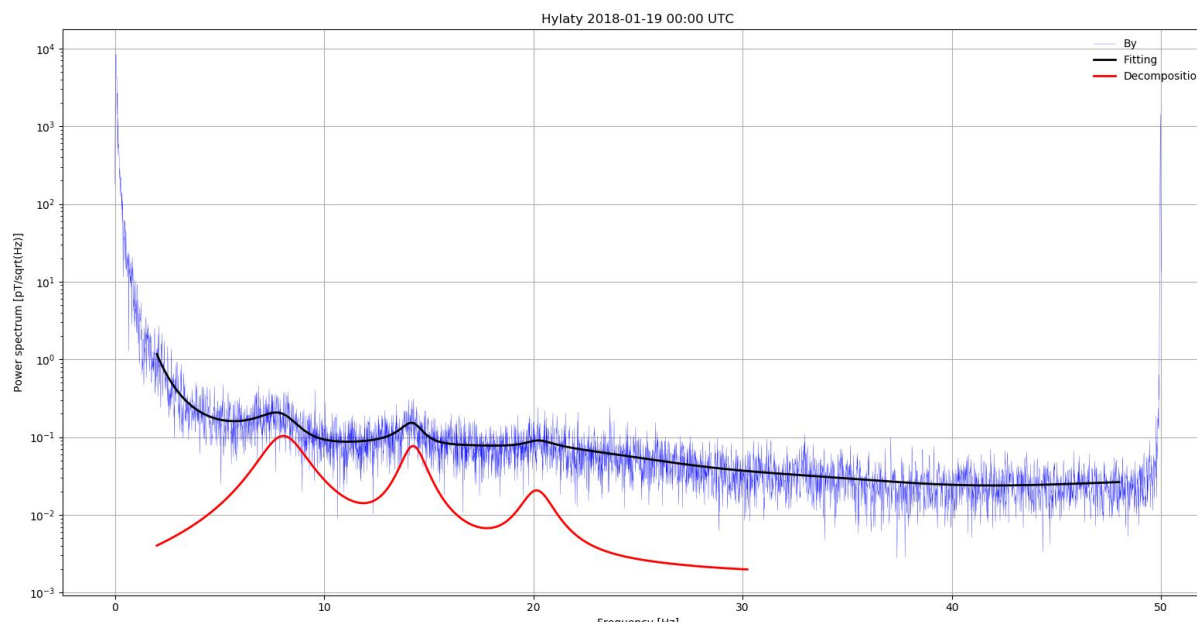
Akademia Górniczo-Hutnicza im. Stanisława Staszica w Krakowie
AGH University of Science and Technology

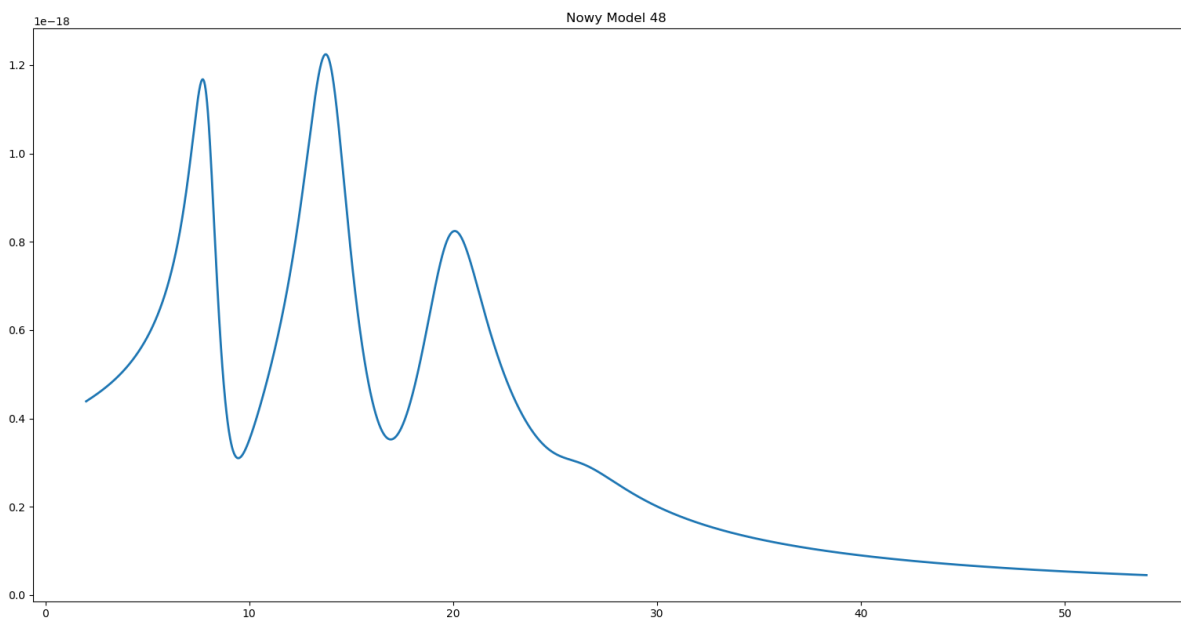
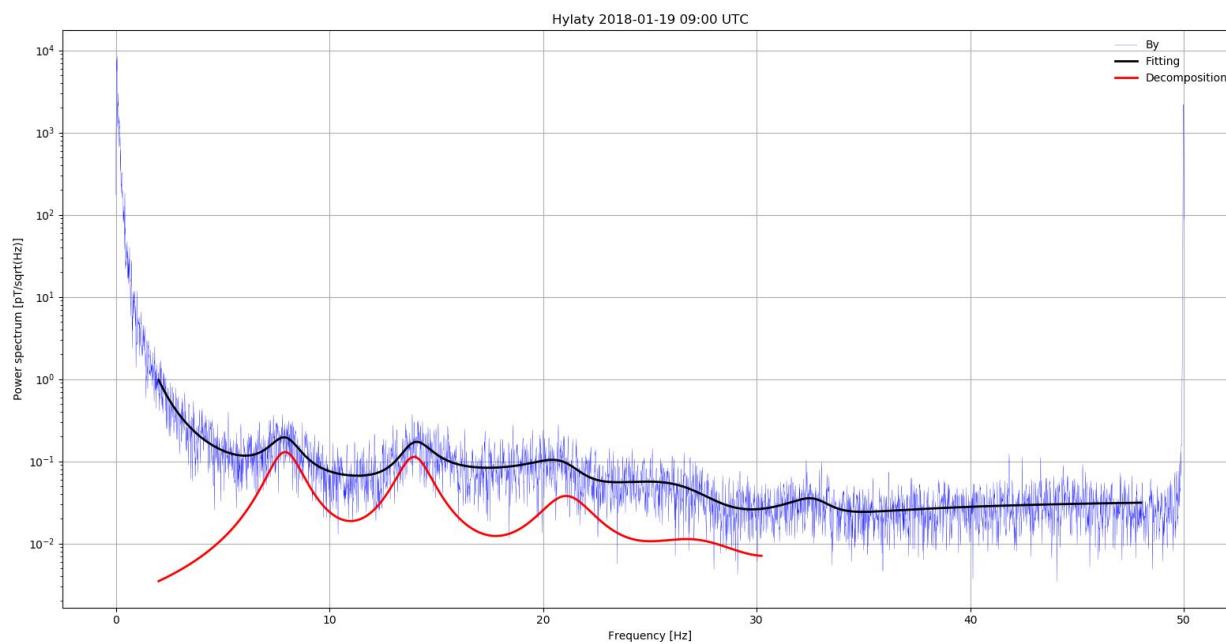
26.06.2019

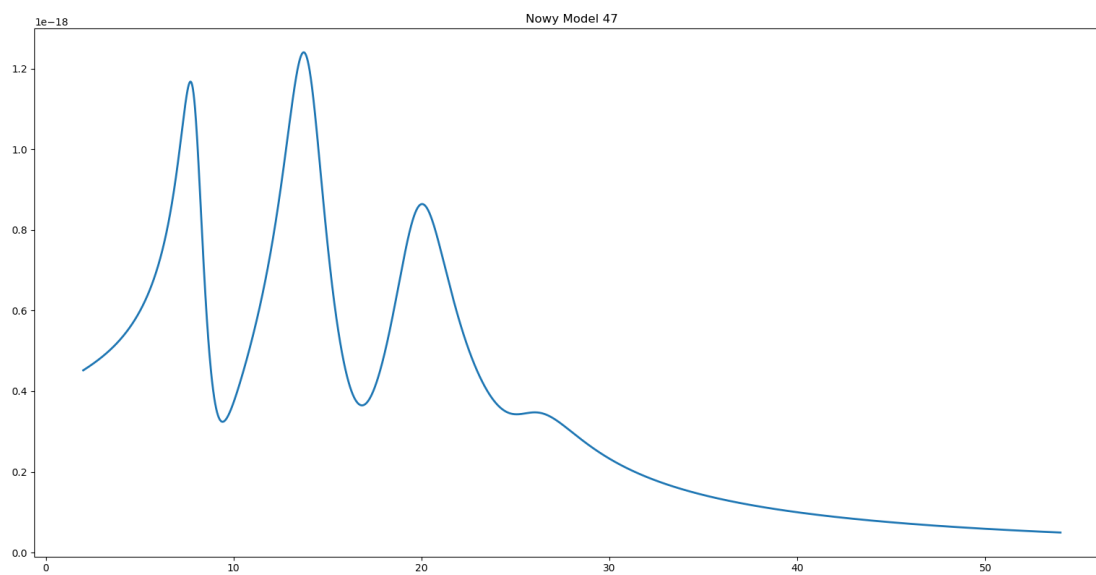
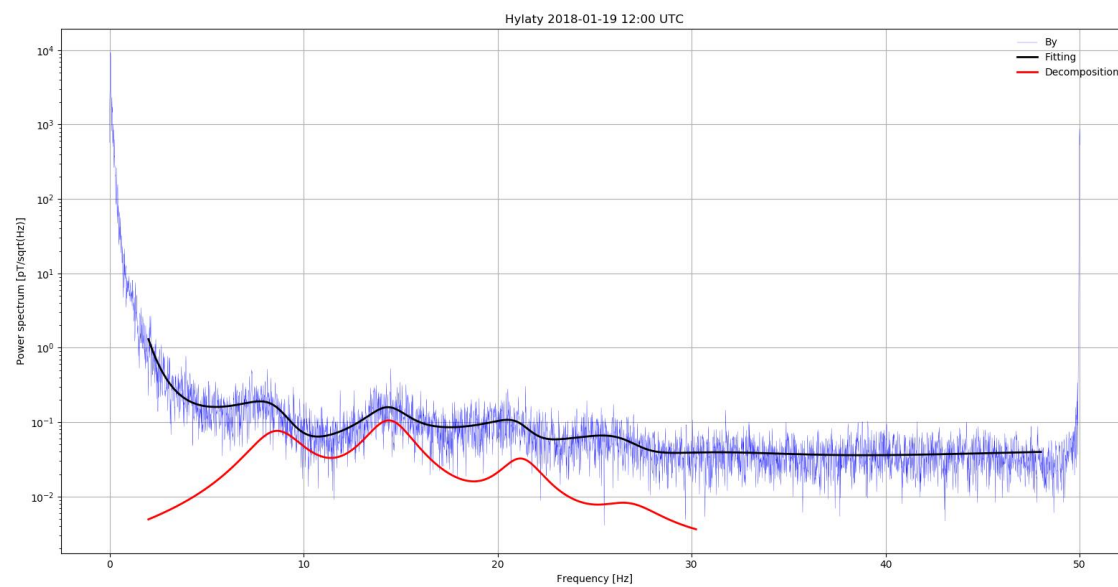
2D mapping, brief remind:

- Two ELF stations
- Based on the decomposition method
- Precision of a 1 degree (111 km)
- 5 min. intervals

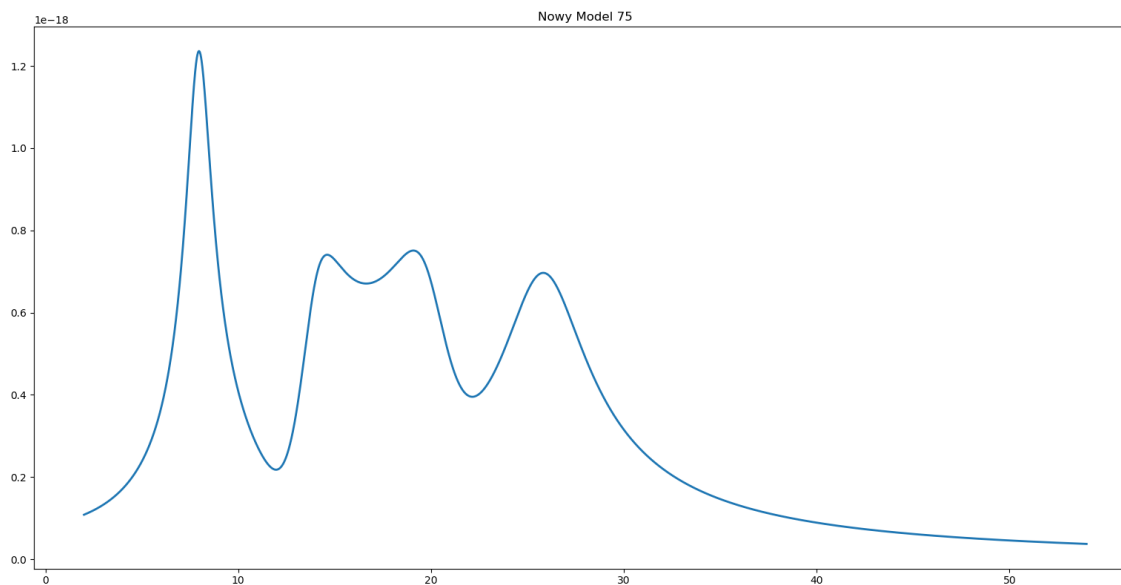
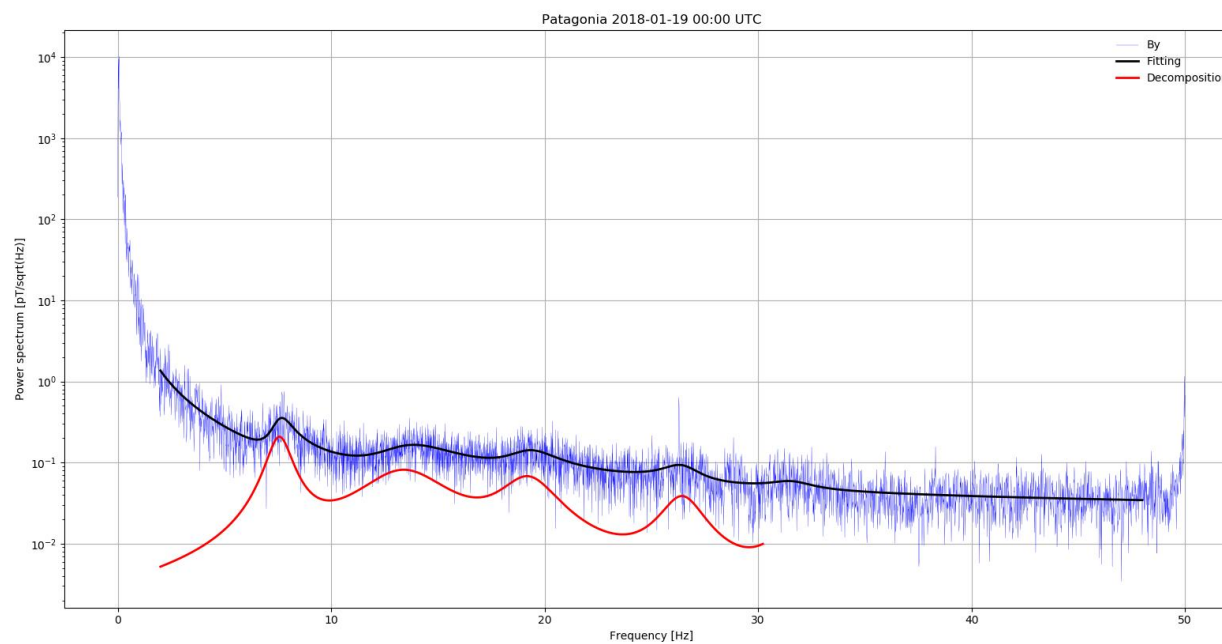
Hylaty measurements (19-01-2018)

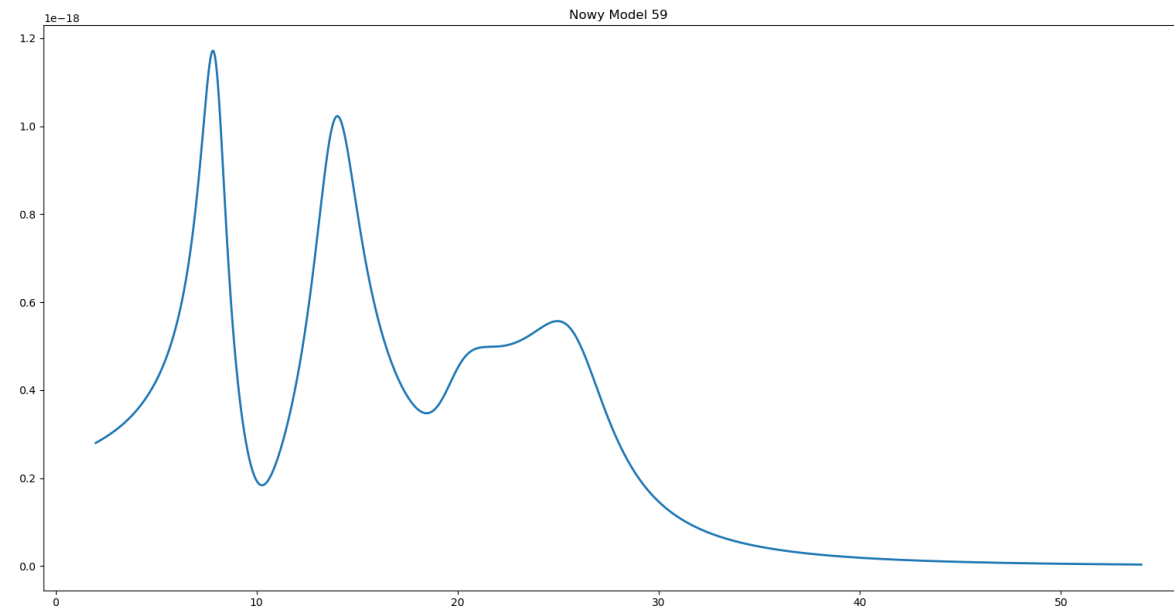
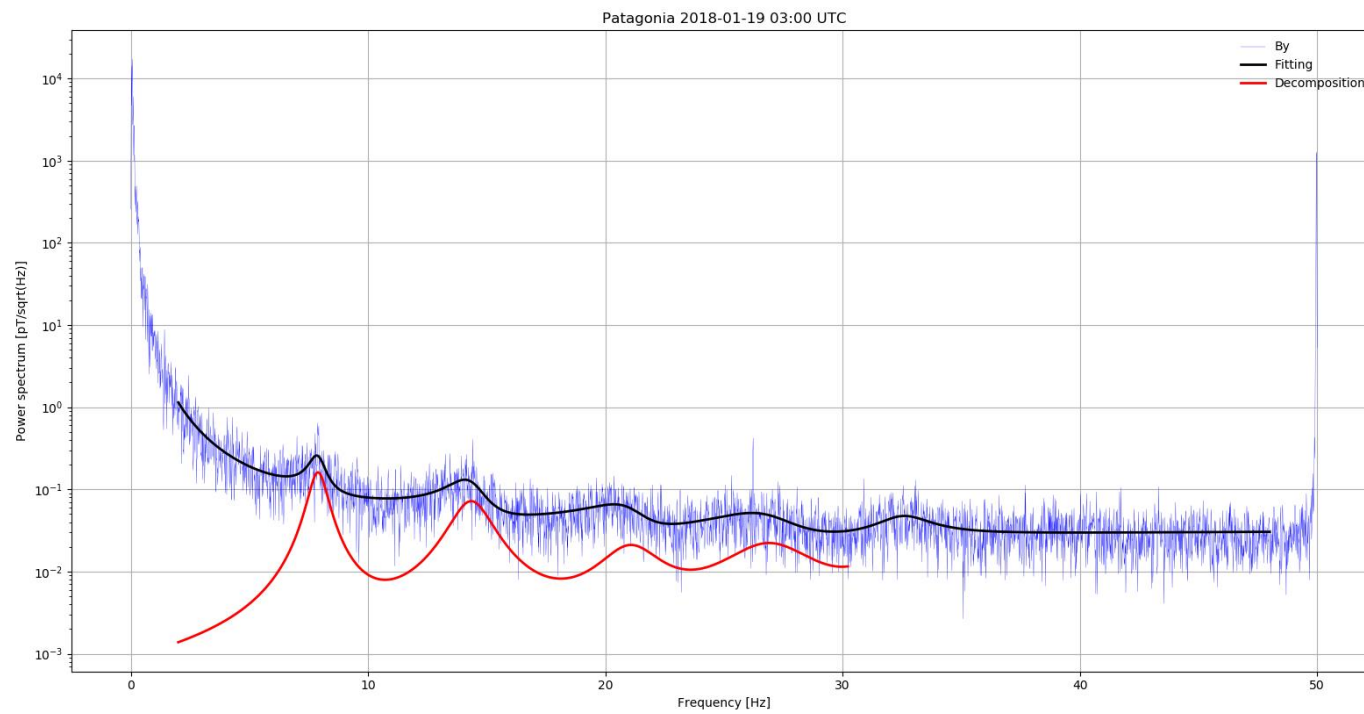


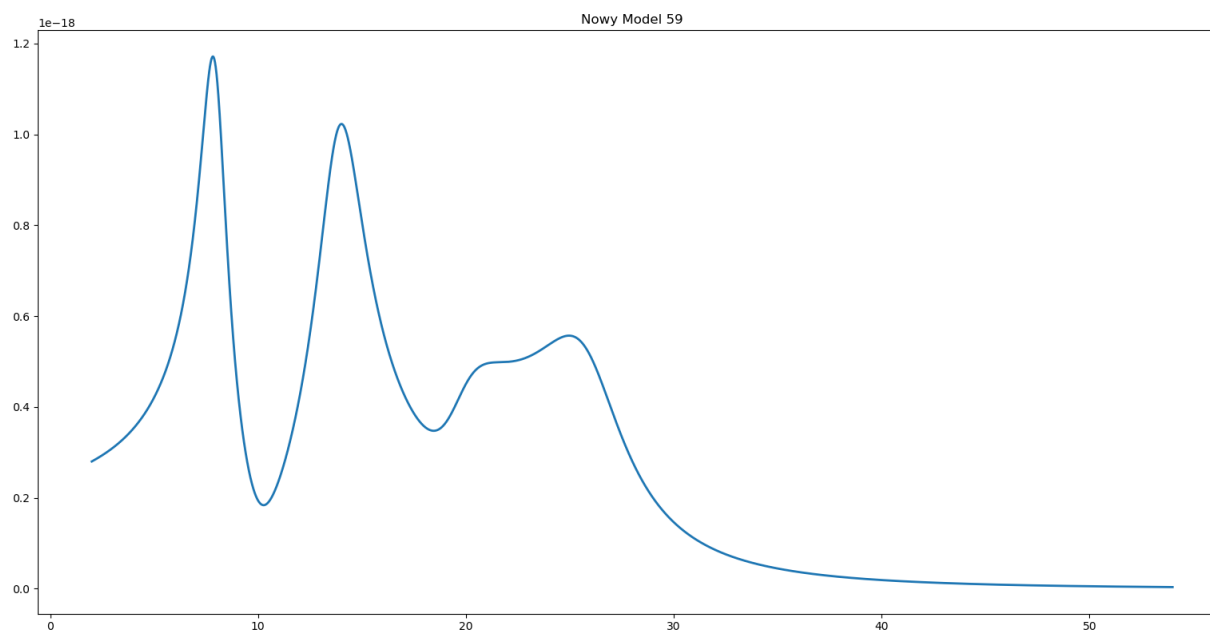
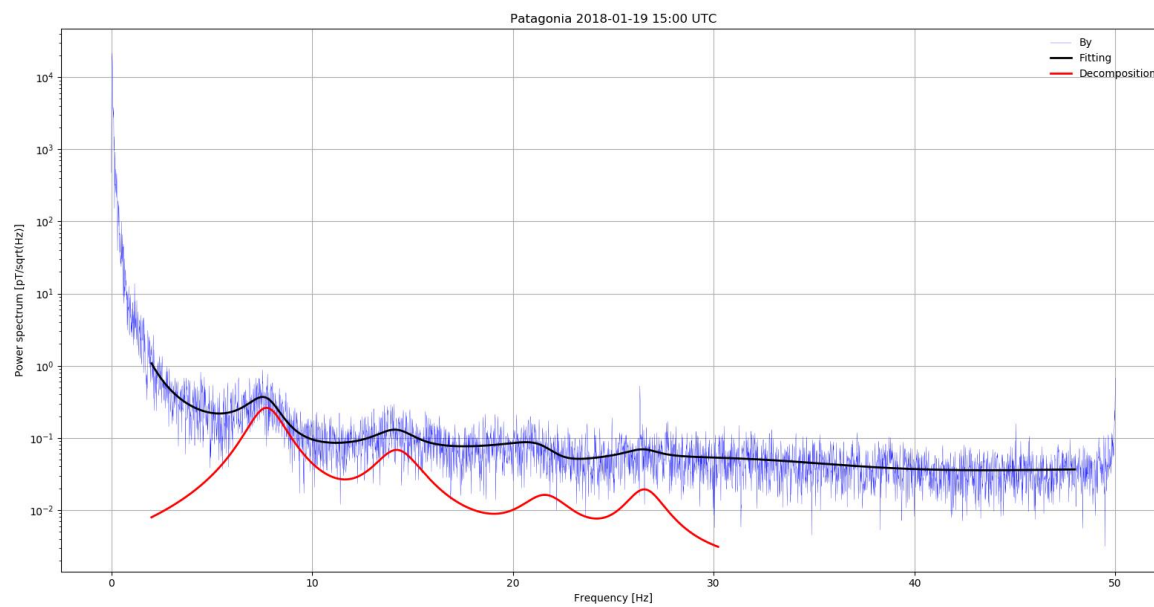




Patagonia measurements (19-01-2018)







Results



Localisation of storm centre based on Hylaty and Patagonia stations - 19th January 2018 - 00:00 UTC



Localisation of storm centre based on Hylaty and Patagonia stations - 19th January 2018 - 03:00 UTC



Localisation of storm centre based on Hylaty and Patagonia stations - 19th January 2018 - 06:00 UTC



Localisation of storm centre based on Hylaty and Patagonia stations - 19th January 2018 - 09:00 UTC



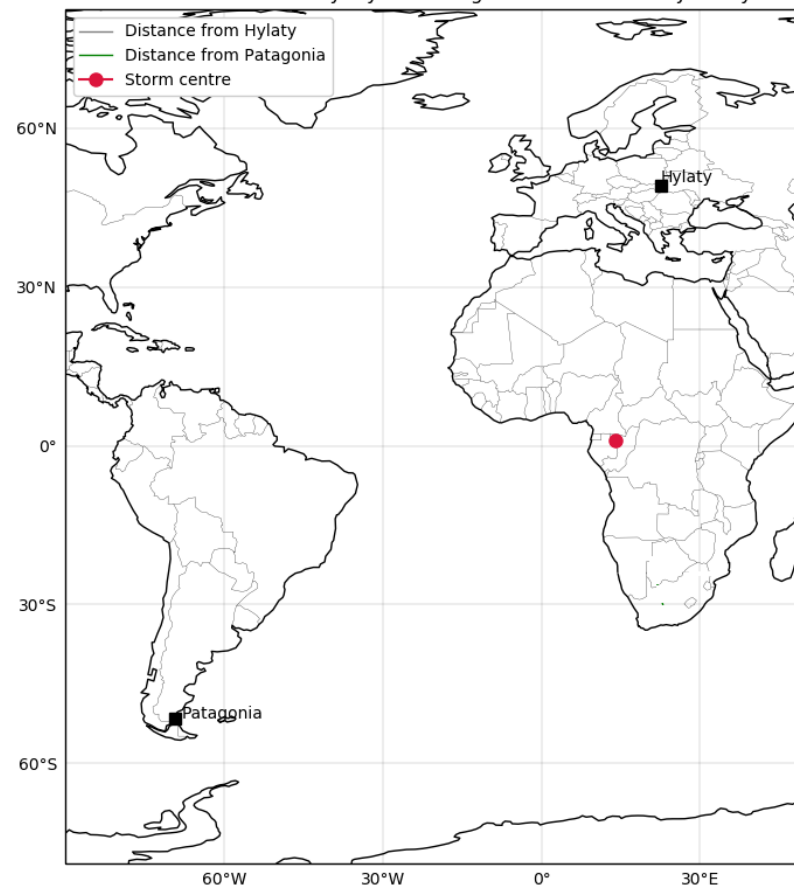
Localisation of storm centre based on Hylaty and Patagonia stations - 19th January 2018 - 12:00 UTC



Localisation of storm centre based on Hylaty and Patagonia stations - 19th January 2018 - 15:00 UTC



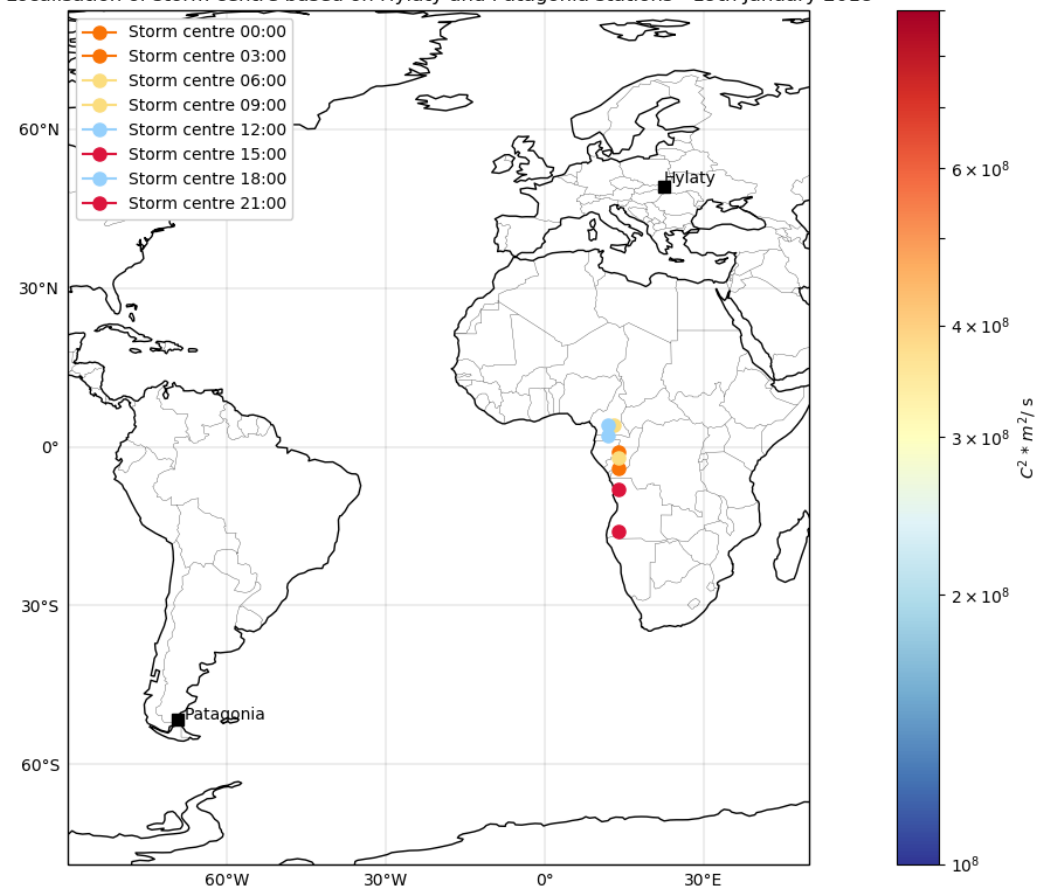
Localisation of storm centre based on Hylaty and Patagonia stations - 19th January 2018 - 18:00 UTC



Localisation of storm centre based on Hylaty and Patagonia stations - 19th January 2018 - 21:00 UTC



Localisation of storm centre based on Hylaty and Patagonia stations - 19th January 2018



What's next?